



Annual Report 2023



The Gathering Place®
a refuge for rebuilding lives

October 1, 2022
to September 30, 2023

About Us

The Gathering Place (TGP) offers services to combat poverty and address the impacts of marginalization and oppression that are often contributing factors to poverty or homelessness.

By offering low-barrier access to a broad range of basic necessities and wrap-around care options, TGP guides women, transgender and nonbinary individuals, and children living in poverty from a place of crisis and instability to one of stability and security. While we refer to those we serve as "members," no fees are ever charged for programs or services.



We believe deeply in the power of our community and continually work to strengthen it. Our key values include recognizing individual strengths, building respect and trust, and offering unconditional acceptance.

We are not just a service organization; we are committed advocates for our members and promote social justice for every woman, child, and gender expansive individual in our community.

Our Mission

We are a community of safety and hope where positive relationships, choice, and essential resources transform lives.



Contents

3	Letter from CEO
5	Overview of Poverty and Homelessness
11	How TGP Meets The Need
13	Program Overview and Highlights
16	Member Demographics
17	Strategic Priorities
19	Staff Demographics
20	Financials
21	Our Community
21	Volunteers
22	Donors
32	In-Kind Support
33	Programmatic Partners
36	Board of Directors
37	Thank You
38	Get Involved





DEAR FRIENDS & SUPPORTERS,

As I reflect on the fiscal year 2023, I am filled with pride and gratitude for the community we have built together at The Gathering Place (TGP). During this time, I served as the Vice President of Programs and Services, a role I held for nearly four years. In this position, I had the privilege of overseeing a significant evolution in our services, transforming TGP from a “drop-in” day shelter to an organization offering robust, comprehensive programming that is both low-barrier and trauma-informed.

When I first joined TGP, our primary focus was on providing immediate, essential services to those in need through our day center. We addressed critical short-term needs such as food, clothing, and hygiene, but it became clear that a more holistic approach was necessary to support our members in achieving long-term stability and recovery. Recognizing this, we embarked on a transformative journey to expand and enhance our services.

Our programming has evolved to be robust and comprehensive, grounded in best practices and built on the Substance Abuse and Mental Health Services Administration’s (SAMHSA) pillars of recovery—health, home, purpose, and community. These pillars guide our approach to supporting our members, ensuring that every service we provide contributes to their overall well-being and long-term stability.

We have also made our services low-barrier, meaning they eliminate unnecessary or harmful requirements, rules, and policies, and foster an environment where people can be who they are culturally and emotionally.

By reducing barriers and creating a welcoming, supportive environment, we are able to meet people where they are and provide the tailored support they need to thrive. This transformation has been possible thanks to the dedication and hard work of our staff, volunteers, and supporters.

Together, we have created a community that not only addresses immediate needs but also supports individuals on their journey to recovery and stability.

Today, TGP operates not only a day center but also Elati Village, a micro-community designed to provide safe, supportive housing for women, transgender, and nonbinary individuals. This non-congregate shelter offers a range of wraparound services, including housing focused case management, mental health care, substance use support, and employment assistance, all within a trauma-informed framework.

On February 21, 2024, I was honored to be appointed as the Interim CEO of The Gathering Place. This transition comes at a time when our organization, like many others, is navigating both an increase in homelessness in our city and financial challenges. The pandemic underscored the critical nature of our work, and now more than ever, we need the support of our community to continue providing life-changing services.

We must be realistic about our struggles—financially and in the context of the increasing homelessness in our city. Despite these challenges, there is hope. Our commitment to our members remains unwavering, and we continue to deliver essential services that transform lives.

However, there is a sense of forgottenness. Many in our community do not realize the extent of the ongoing crisis and the critical role that organizations like TGP play in addressing it.

Transparently, I did not seek out the Interim CEO position but felt compelled to step into the role out of a deep commitment to our mission and values. I believe these values are crucial for guiding TGP into its next chapter, where we can better meet the needs of our community and rally support for our very deserving cause.

This perspective allows me to approach leadership in a way that flattens power dynamics and truly embodies our principles of equity and inclusion. As a community-centric organization, this change presents an opportunity to further integrate these values into everything we do.

Change creates opportunity. We have witnessed this truth firsthand as we adapted our services to better meet the needs of those we serve. Our accomplishments in 2023 are a testament to the dedication and resilience of our staff, volunteers, and supporters. Together, we have:

- Expanded our case management services to better support families in securing long-term affordable housing.
- Enhanced our wellness programs to offer comprehensive physical and mental health support.
- Increased resource navigation to meet the one-time and short-term needs of members to achieve and maintain stability.
- Continued to provide essential services, such as meals, clothing, and navigation assistance, ensuring that our members have access to the resources they need to thrive.

As we look to the future, we recognize the urgent need for continued community support. The economic volatility, rising homelessness, and staggering inflation we face make our work more important than ever. We need your help to sustain and expand our programs, ensuring that we can meet the growing demand for our services.

Thank you for being a part of this journey. Your support is vital to our mission, and together, we can create a community where we all have access to opportunities to stability and housing.

With gratitude,



Heather Beck (she/her/hers)
Interim CEO, The Gathering Place



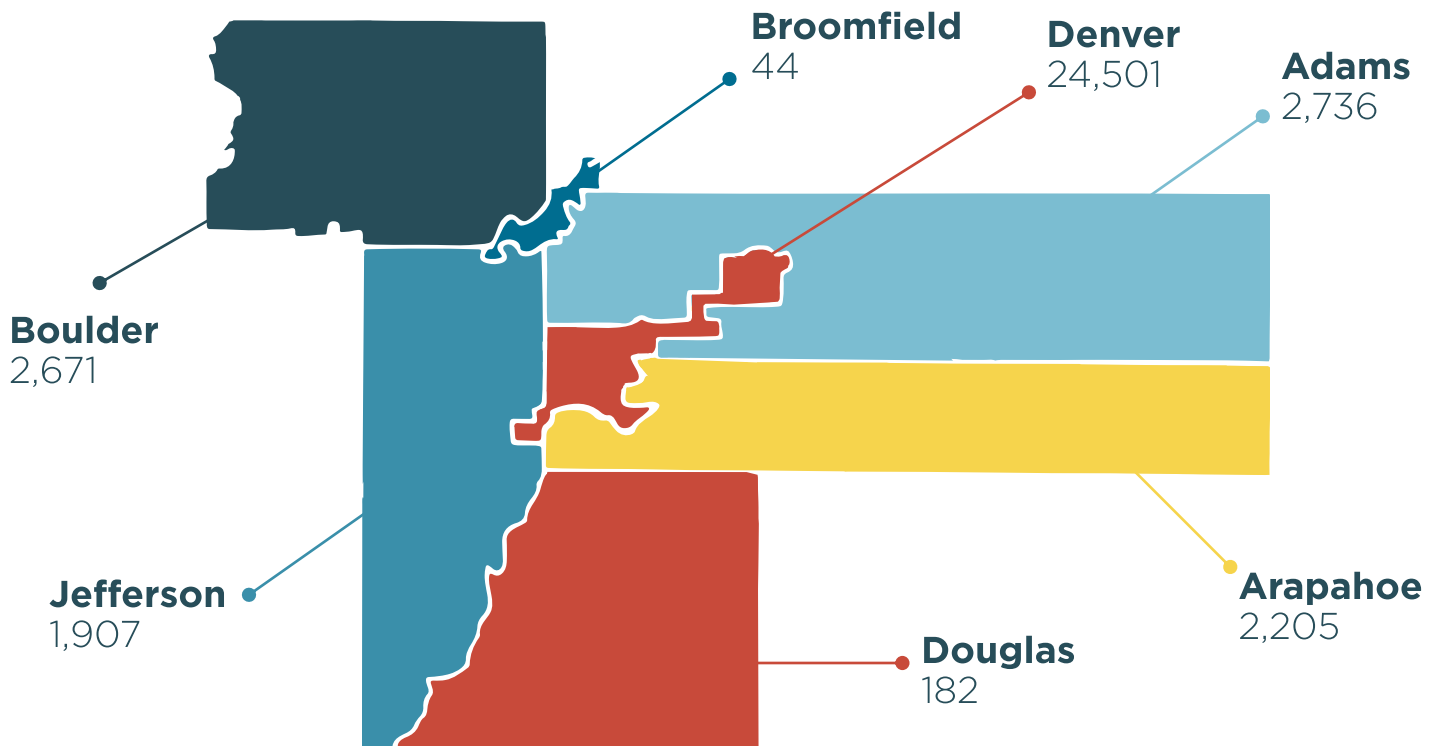


OVERVIEW OF POVERTY & HOMELESSNESS

Homelessness in Metro Denver remains a critical issue, with systemic failures often being the root cause rather than personal shortcomings. In 2023, **30,409 people** accessed services or housing related to homelessness at HMIS Partner Agencies, and **9,065 people** were counted experiencing homelessness on a single night. There has been a noticeable increase in homelessness in Metro Denver over the last year, driven by economic factors, high housing costs, and systemic issues.

Status

Here's a breakdown of people accessing housing and services related to homelessness by county:



CAUSES

The top 5 factors contributing to homelessness according to HMIS 2023 Report

Homelessness happens mostly because of big problems in the system, not personal failures. Here are some of the key causes and barriers:



29%

#1 Relationship Problems or Family Breakup

Many individuals become homeless due to personal or family issues.



29%

#2 Inability to Pay Rent or Mortgage

The high cost of housing in the Denver metro area is very high.



26%

#3 Lost a Job/Could Not Find Work

Losing a job or not finding work can lead to homelessness.



\$35.84/hour

The wage needed to afford a two-bedroom apartment.

\$1,864

The Fair Market Rent for a two-bedroom apartment, needing **\$74,554/year** income.

102 hrs/week

How many hours a minimum wage worker needs to work to afford a two-bedroom.

\$29.69/hour

The wage needed to afford a one-bedroom apartment.

\$1,544

The Fair Market Rent for a one-bedroom apartment, needing **\$61,749/year** income.

84 hrs/week

How many hours a minimum wage worker needs to work to afford a one-bedroom.



#4 Eviction or Asked to Leave

26%

Being evicted or asked to leave home can force people into homelessness.

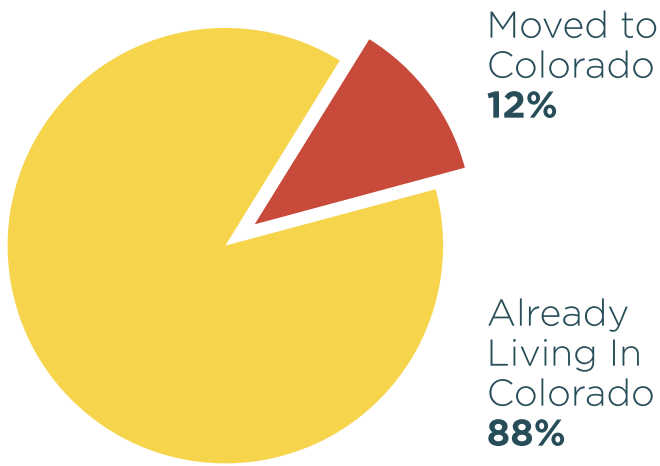


#5 Abuse or Violence at Home

22%

Domestic violence is a major reason why people, especially women and children, become homeless.

MYTHS



Contrary to the belief that people experiencing homelessness move to Colorado from other states, 88% of respondents since 2015 reported their last permanent address was in Colorado.



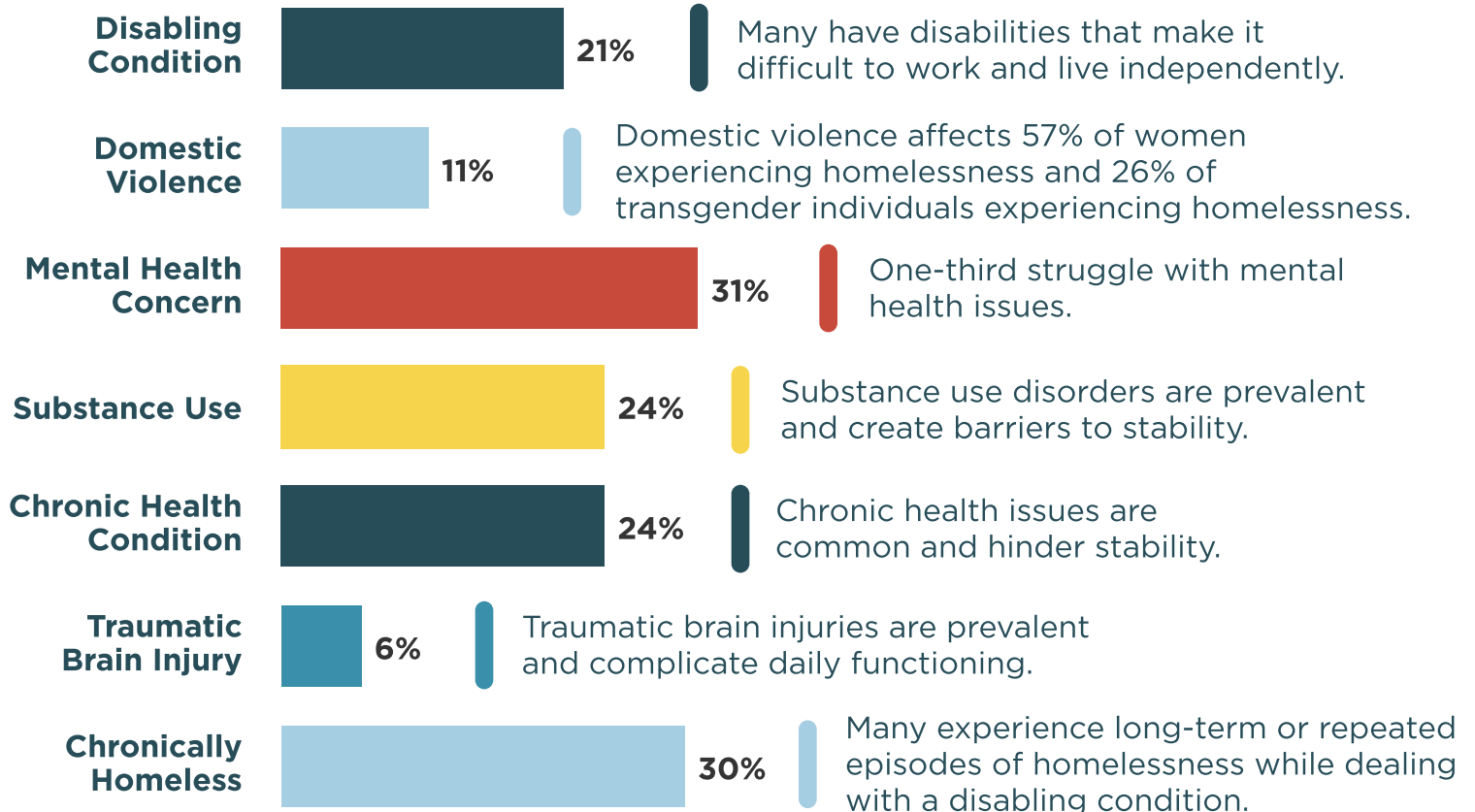
More people are newly homeless (**44%**) than chronically homeless (**30%**), especially among families (**50% vs. 13%**).

94% of people surveyed said they did not choose to become homeless.

CONDITIONS & BARRIERS

*Source: PIT 2023 Report

People experiencing homelessness often face additional challenges and barriers to stability:



RACIAL DISPARITIES

Certain racial groups are overrepresented in homelessness due to systemic racism and inequities:

NATIVE HAWAIIAN/ PACIFIC ISLANDERS

Overrepresented by
5x
in HMIS and **15x** in
the point-in-time
count; **5.5x** in
Denver County.

BLACK OR AFRICAN AMERICAN PEOPLE

Overrepresented by
3.7x
in HMIS and **3.4x** in
the point-in-time
count; **4.1x** in
Denver County.

AMERICAN INDIAN OR ALASKA NATIVES

Overrepresented by
3.6x
in HMIS and **3.7x** in
the point-in-time
count; **3.7x** in
Denver County.

MULTIRACIAL PEOPLE

Overrepresented by
1.6x
in HMIS and **1.8x** in
the point-in-time
count; **1.6x** in
Denver County.

WHITE PEOPLE

Underrepresented by
1.4x
in HMIS
and **1.3x** in the
point-in-time count.

TRANS & NONBINARY HOMELESSNESS

Transgender and nonbinary individuals experience homelessness at higher rates, especially unsheltered homelessness:

TRANS YOUTH: More likely to become homeless due to family and community rejection, often extending into adulthood due to employment discrimination.

Black Trans People face high unemployment (**20%**) and poverty rates (**38%**).

ACCESS TO SHELTERS

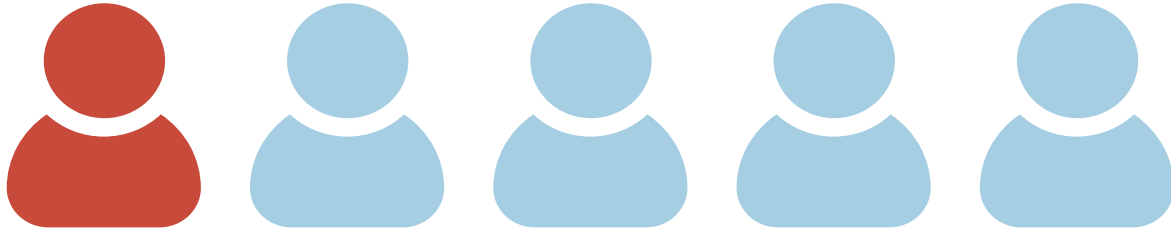
Many gender minorities face discrimination and lack of protections in shelters:

63%

Transgender Adults

80%

Nonbinary Adults



EVICIONS: 1 in 5 trans people are evicted due to discrimination.

HOMELESSNESS RATE

30% of transgender people have been homeless at least once.

INCREASE

The number of trans people experiencing homelessness increased by **88%** between 2016 and 2019.

SHELTER DENIAL

Nearly **30%** of trans people were denied shelter because of their gender identity.

SHELTER SAFETY

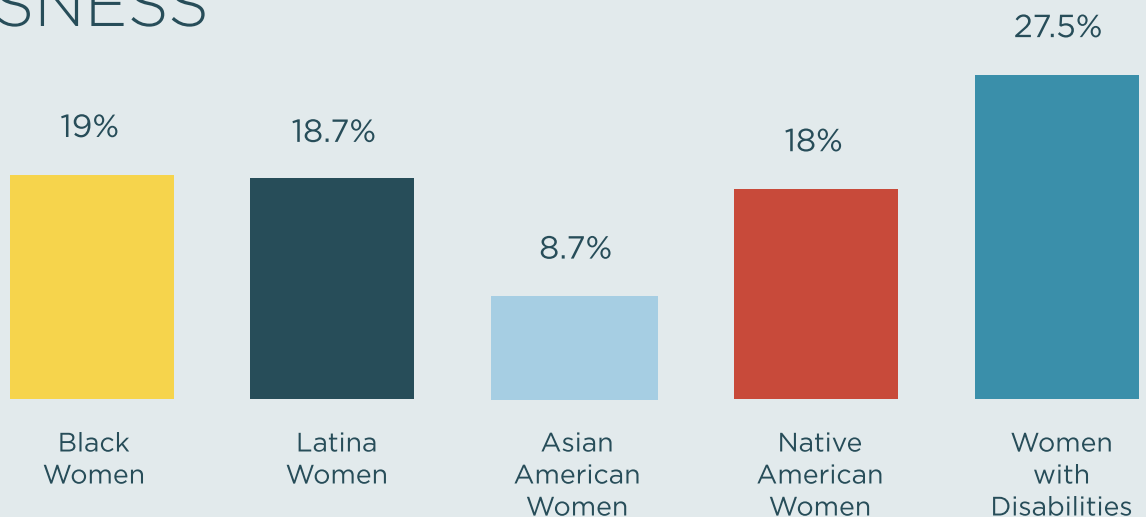
44% of trans and nonbinary people reported mistreatment at shelters, and **56%** found it difficult to secure shelter due to their gender identity.

WOMEN, SINGLE MOTHERS & SINGLE CAREGIVERS EXPERIENCING HOMELESSNESS

Women and single mothers face unique challenges that contribute to their homelessness:

POVERTY RATES

Women are more likely to live in poverty, especially women of color.



SINGLE MOTHERS

Nearly one in three single-mother families live in poverty.

COLORADO

Nearly two out of three single mothers lack adequate income to meet basic needs.

HEALTH AND SAFETY

Women experiencing homelessness face higher rates of health issues and violence.

LIFESPAN

Women experiencing homelessness live, on average, 17.5 years less than the general population.

HEALTHCARE

Limited access, with many forgoing necessary services due to cost.

PREGNANCY

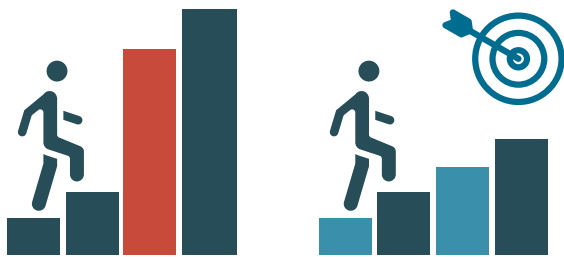
Higher risk for complications, with children more likely to be born with health issues.



HOW TGP MEETS THIS NEED

TGP understands the complexities of intersectionality and marginalization, recognizing that our members—women, transgender, nonbinary individuals, and children—face multiple, overlapping forms of discrimination and disadvantage. **These populations experience disproportionate rates of homelessness and poverty.**

Our member-centered programs are designed to address their unique barriers, challenges, and needs. Rooted in **equity** and guided by the **voices of our members**, we foster a **culturally responsive** and **inclusive community**.



High-Barrier vs Low-Barrier Access

Our commitment to best practices and evidence-based strategies has led to significant outcomes. Members reach their goals, attain stability, and remain part of our vibrant community. By centering our efforts around the voices and needs of our members, we create a welcoming, supportive environment where everyone is empowered to succeed.

Additionally, by reducing barriers and advocating for systemic change, TGP challenges inequities and works towards a more equitable society where everyone has access to stabilizing services and housing.



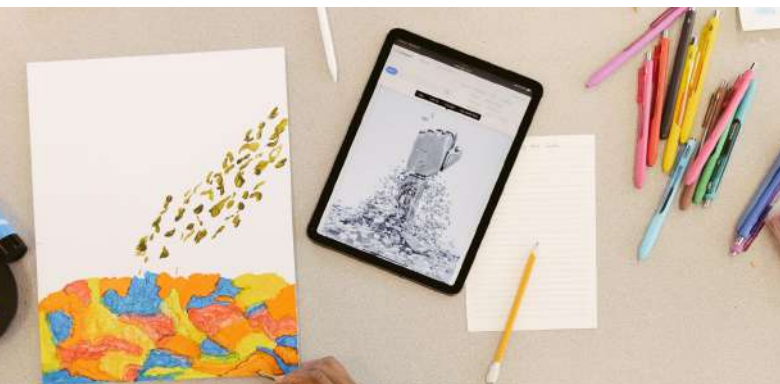
TGP operates as a low-barrier, trauma-informed shelter with programs based on the Substance Abuse and Mental Health Services Administration (SAMHSA) pillars of recovery.

By eliminating unnecessary or harmful requirements, rules, and policies, we create an environment where people can be their authentic selves, culturally and emotionally. This approach allows us to meet individuals where they are, providing the tailored support they need to thrive.



SAMHSA Pillars of Recovery

What sets TGP apart is our dedication to maintaining a sense of community even after individuals are housed. We recognize that community and connection are vital for everyone's well-being, regardless of their housing circumstances. Our culturally inclusive environment, enriched through diverse art projects and activities, fosters a sense of belonging and ongoing support.



Through our holistic and inclusive approach, TGP addresses immediate needs while promoting lasting change. We help individuals and families move toward stability and self-sufficiency, ensuring that everyone who walks through our doors feels valued, supported, and empowered to achieve their goals.

Government Approach and TGP's Role

Federal, state, and local governments recognize that addressing homelessness requires collaboration with non-profits to create effective solutions. **TGP partners with the Denver City Government and aligns with the City's approach to addressing homelessness.**

Our efforts are supported by state and federal funding, allowing us to extend our reach and impact significantly. TGP is part of the Denver Homeless Leadership Council (HLC) and is integral to the City of Denver's comprehensive plan to combat homelessness through several initiatives, including:

ALL IN MILE HIGH

Denver Mayor Mike Johnston's initiative aims to move 2,000 people from unsheltered homelessness to indoors by December 31, 2024. TGP is a key partner in this effort, operating TGP's micro-community, Elati Village.

This non-congregate shelter specifically serves women, transgender, and nonbinary individuals, providing a safe, supportive environment with wraparound services such as mental health care, substance use support, and employment assistance.

PANDEMIC SHELTER RESPONSE

TGP stepped in and responded to the need to create shelter during the pandemic for women, transgender, and nonbinary individuals. TGP partnered with the City and other non-profits to open a non-congregate shelter called Rodeway operated out of a former motel. Rodeway provided shelter and housing-focused case management for up to 100 members.

PROGRAM OVERVIEW & HIGHLIGHTS

TGP offers comprehensive services tailored to women, transgender and nonbinary individuals, and children. Our adult services focus on personal growth and stability, while our family services support women, transgender, and nonbinary individuals and their children, helping them meet basic needs and achieve long-term stability for their family in a welcoming, kid-friendly environment.

Adult Programs for Women, Transgender, and Nonbinary Individuals



HOUSING-FOCUSED CASE MANAGEMENT

Case managers assist members in securing housing and provide ongoing support throughout the process.



WELLNESS PROGRAM

This program offers resources, education, peer support, and community activities to promote physical and mental health.



TGP'S MICRO-COMMUNITY, ELATI VILLAGE

Our non-congregate transitional housing shelter, which opened in March 2024, offers 44 units specifically designed to serve women, transgender, and nonbinary individuals.



JOBS & EDUCATION

Supports members in finding employment and educational opportunities, enhancing their ability to achieve long-term stability.



24/7 EMERGENCY NON-CONGREGATE SHELTER, RODEWAY

Provided non-congregate shelter and housing-focused case management for up to 100 women, transgender, and nonbinary individuals until August 2023, when the shelter closed.

Our comprehensive programs and services include housing-focused case management, substance use support, mental health support, employment assistance, access to mainstream benefits, and essential services.



BRIDGET'S BOUTIQUE

TGP's clothing bank helps members find essential seasonal clothing, work attire and comfortable, casual attire for adults.



ART PROGRAM

Provides support groups and events such as art, music, and writing, which support well-being and recovery.



MEALS AND FOOD ASSISTANCE

Provides freshly prepared meals three times daily and access to a food pantry.



NAVIGATION SERVICES

Resource Navigation links members to TGP programs and outside services to improve members' access to housing and other resources.



GENERAL SERVICES

Members have access to showers, a nap room, hygiene supplies, laundry facilities, mail delivery, telephones, and a computer lab.

Resource Navigators do not solely refer; rather, they are also tasked with the responsibility to listen, advocate, and act on behalf of the communities they support.

Family Program

TGP's Family Program provides comprehensive support to women, transgender, and nonbinary individuals and their children, helping them meet basic needs and achieve long-term stability in a welcoming, kid-friendly space.



MEALS AND FOOD ASSISTANCE

Provides freshly prepared meals three times daily and access to a food pantry.



NAVIGATION SERVICES

Resource Advocates assist families with benefits, school enrollment, shelter, and housing referrals.



CLOTHING

Provides gently used and new clothing and winter gear for infants and children, along with thrift store vouchers.



ESSENTIAL BABY PRODUCTS

Offers diapers, wipes, formula, car seats, strollers, and other infant care items.



GENERAL SERVICES

Members have access to showers, hygiene items, laundry, phones, mail, and a rooftop playground.



HOUSING-FOCUSED CASE MANAGEMENT FOR FAMILIES

Case Managers support families in securing and maintaining housing.



WELLNESS PROGRAM

This program offers a range of services for parents or caregivers, along with arts and wellness activities for children to promote physical and mental health.

2023 IMPACT

5,883 SERVED

40,087 VISITS AT
DAY CENTER

1,068 CHILDREN
SERVED

123 HOUSED

1,017 FAMILIES
SERVED

103,965 MEALS
SERVED

3,010 STABILITY
SERVICES



Research indicates that stability services play a critical role in improving health outcomes. For instance, access to stable housing reduces exposure to hazards and stress, leading to better physical and mental health. Additionally, supportive services such as case management and wellness services address individual health needs directly, promoting overall well-being and enabling individuals to participate fully in the community.

By integrating these stability services, TGP empowers and supports individuals overall health and economic stability, creating a foundation for long-term success and self-sufficiency.

955 Family Navigation

1117 Navigation Services

1092 Wellness Services

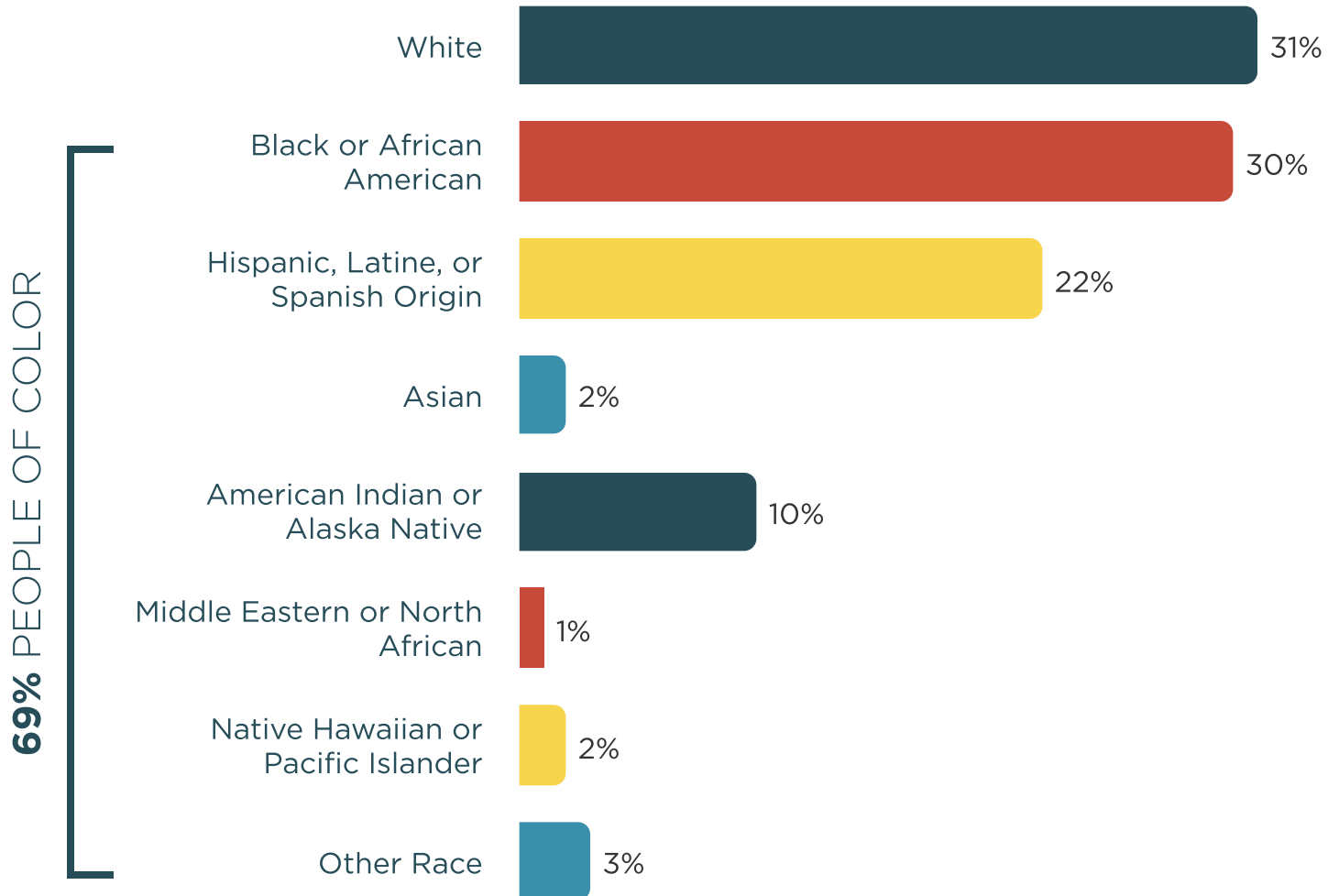
1282 Housing-Focused Case
Management

936 Art Program

708 Jobs and Education Program

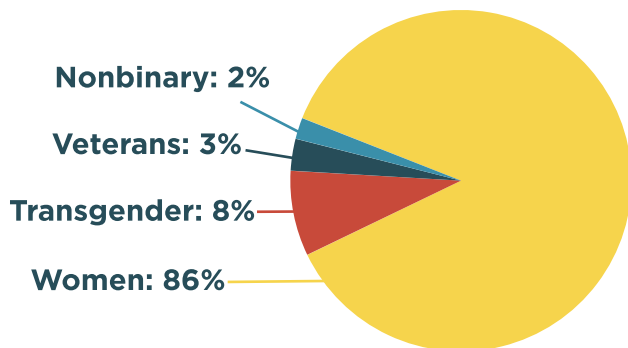
128 24/7 Non-Congregate Shelter

MEMBER DEMOGRAPHICS



Language

- 91%** English
- 5%** Spanish
- 2%** English & Spanish
- 1%** Other
- 0.1%** French



STRATEGIC PRIORITIES HIGHLIGHTS

Our organization-wide efforts are guided by six strategic priorities:



Equity in Action



Staff Wellness & Retention



Fostering a Learning Culture



Strengthening Mission, Vision, Values



Member Leadership



Safety & Security

HIGHLIGHTS FROM 2023

Equity

- Reduced barriers to resources and benefits
- Provided guides on recognizing bias in hiring process
- Launched affinity spaces
- Secured grant to fund Growth and Learning Manager
- Began to set a baseline for constituent demographics and representation
- Community-centric fundraising model that seeks to meet the needs of the community and diversify revenue streams

Staff Wellness & Retention

- Increased staffing and updated key processes
- Increased benefit offerings and updated EAP
- Implemented leave of absence policy
- Secured funding in Caring for Denver grant for turnover/retention evaluation



Fostering a Learning Culture

- Implemented low-barrier training
- Increased knowledge of Narcan and fentanyl
- Implemented care coordination meetings
- Implemented in-person and on-demand training
- Provided access to more robust training catalogs
- Revised onboarding process to include comprehensive training
- Secured funding for and implemented reflective supervision

Strengthening Mission, Vision, Values

- Launched staff-led workgroups focused on organizational priorities

Member Leadership

- Launched member-facilitated wellness groups
- Continued using ethical storytelling to engage members in TGP communications
- Facilitated the development of the mini-documentary featuring Rodeway members

Safety and Security

- Partnered with Denver Police to do a safety assessment of our site
- Contracted additional outdoor cleaning
- Implemented facility ticketing system
- Participated in neighborhood engagement, including Good Neighbor Agreements

STAFF DEMOGRAPHICS

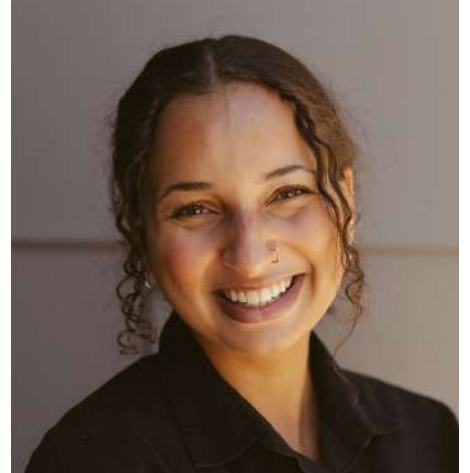
56% People of Color

86% Woman

8% Nonbinary or
Transgender

2.1% Live with
a disability

15% Bilingual Staff



We are committed to fostering equity and inclusion, investing in learning and development, engaging with members and the community, and - as best as possible - ensuring physical and emotional safety.



FY 2023 FINANCIALS

REVENUE

Individual Contributions	\$1,212,297
Foundation	\$1,237,191
Corporate and Community Partners	\$266,710
Government Grants and Contracts	\$1,929,110
In-Kind Revenue	\$258,172
Other Income	\$11,938
TOTAL	\$4,915,418



EXPENSES

Program Services	\$5,125,156
Fundraising	\$547,715
General & Admin	\$670,725
TOTAL	\$6,343,596



TOTAL REVENUE \$4,915,418

TOTAL EXPENSES \$6,343,596

[Click here](#) to view our full 2023 audited financial statement.

OUR COMMUNITY

At TGP, our members find community. Thanks to the people who contribute their skills, dedication, philanthropy, and advocacy to foster a more inclusive, equitable, and compassionate world.

Our impact is magnified by the diverse and meaningful support we receive from our vibrant contributors.



CORPORATE & COMMUNITY VOLUNTEERS

Amazon Den3

BranchPattern

Brianna Tancher & Friends

CU Denver Pre-PA Club

Digible, Inc.

Electrical Workers Minority Caucus

Griffis Residential

His Helping Hands

Junior League of Denver

King of Glory Lutheran Church

Maya Wilbourn & Friends

McKinstry

Otten Johnson

Power Home Remodeling

Regis University

Robinhood

Ronald McDonald House Charities of Denver

Teknion

Thornton High School Students

Vectra Bank

DONORS

\$25,000+

Charlene Byers

The Jay and Rose Phillips Family
Foundation of Colorado

Caring For Denver

The Denver Foundation

The Anschutz Foundation

Wilma E. Godfrey

Susan Horne

The Women's Foundation
of Colorado

Elise Maskell

Sisters of St. Francis - Sacred
Heart Charitable Fund

Fidelity Charitable Gift Fund

Nord Family Foundation

Saxer Family Foundation

Frank E. Payne And Seba B.
Foundation

Fulcrum Foundation

Messiah Community Church,
ELCA

Colorado Housing and Finance
Authority

The Colorado Health Foundation

MDM Foundation

William G. McGowan
Charitable Fund



DONORS

Vanguard Charitable
The Denver Post Community Foundation
Norman Raab Foundation
Schwab Charitable Fund
Buell Foundation (Temple Hoyne)
Mile High United Way
Colorado Coalition for the Homeless
Schlessman Family Foundation
BOK Financial
Colorado Nonprofit Development Center
George & Estelle Sands Foundation
Junior League of Denver
Rose Medical Center
SEI Private Trust Company
CO Blueprint to End Hunger

\$10,000 - \$24,999

Emergency Food and Shelter Program
The Benevity Community Impact Fund
Christopher Colclasure
Carolyn Benoit
Bethlehem Foundation Of New Mexico
Colorado Access
Liberty Lightbearers Foundation
Mel Wolf Foundation
Michelle and Jason Murray
Joanne F. Norris
Yoko Ono Lennon
Pine Ridge 1969 Trust
Dave R. Schmitz
Staley Family Foundation
Patricia Stevinson
WilMac Foundation

DONORS

\$1,000 - \$9,999

American Online Giving, The Smith-Sethi Charitable TST, Snyder White Oaks Foundation of Delaware, Inc., Jeremy McCallum, Tillery Eleanore Scholarship, Grapevine - A DAF of Social Good Fund, Charles R. Jelm Charitable Foundation, Judith and Edward Huffman, Connie Mack Lovvorn, Merrill Lynch, Mary Schultz, Austin Community Foundation

The Chill Foundation, Alison Dinn and Jeff Goodman, The Flood Family Trust, George Lichter Family Fund, Indigo Oak Fund (formerly Andrus Family Foundation), Zephyr Isely, Patricia Kelly and Thomas Dufficy, Lennox Family Foundation, Louis R. and Dorothy M. Meister Foundation, The Mabel Y. Hughes Charitable Trust, John Malik, Martin Family Foundation

McKinstry Charitable Foundation, Otten Johnson Charitable Foundation LLC, Rose Community Foundation, South Denver VFW Post 2461, Julie Stevens, T&R Birdsong Funding, The Herb Alpert Foundation, VADM Richard H. Truly, UCHealth, Peak Beverage, Pamela Fair, Hugh Pitcher and Linda Lebsack, Records-Johnston Family Foundation Inc

Steve and Kathy Revenig, Lindsey Beck, First Western Trust, Atlas Metal & Iron Corp, Robert McGinty, Jr.

Katherine Coerver, National Philanthropic Trust, Christian Living Communities, LPL Financial, Renaissance Charitable Foundation Inc., Jessica and John Dapper, Maureen Bradshaw, Jon Fairbrother, National Christian Foundation Rocky Mountains, Connie and David O'Neill, Joan R. Sullivan, T. Rowe Price Program for Charitable Giving

Vehicles For Charity, ARC Thrift Stores, Matthew Aeschbacher, Annie Bachman, Peter Culshaw, Walt and Paige Garnett, The Kissinger Family Foundation, Inc., Jeffrey Manuel, Bethany Pickard, Raymond James Charitable, Robert Rhue, Ayliffe and Fred Ris, Karen Wachtel, Thrivent, Lisa Tracey and William Carter, Robert Wiegand II

Charities Aid Foundation of America C/O CyberGrants, Sherlyn and Gregory Keiling, Marion and George Curtis Lynn and Tim Garrelts, Graland Country Day School, Elizabeth A. and Peteris J. Grinevics Digible Inc., Todd and Robin Larabee, Bruce Moore, Richard Munoz, David Oswald, Private Wealth Management | US Bank, RevGen Partners

Charles Shively, St. Frances Cabrini Parish, Tim Bain, Ms. Pam Kennel, Fidelity Brokerage Services LLC

DONORS

\$1,000 - \$9,999

Marly Strouss-Tallman, Brenda and Bruce Campbell, Bright Funds, Pamela Danos, Food Bank of The Rockies, Jen Baltz, Art and Business One, Richard Foster, Ana and Dave Fuchs, Walter W. Garnsey, Jr., Christine and Greg Petty, Barbara and Mark Risner, Deborah D. Sandquist, Regis University, Salesforce, Iola Neumayer, Emily Vilkus, Julian Benz

Centennial Lutheran Church, Cristin Hughes, Merry Maids, Jana Persky, Konnie and Jack Thompson, Claire Zilber, M.D., Meta Payments, James Orear, Gary Bliss, James King, Stan Siefer, Laura Hanson, Karen and Kris Ordelheide, Kamila Shirley, Kathy Eckhardt, Brian Zander, Elaine and Max Appel, Dhiana and David Armstrong, Beverly Beattie, Betsy and Haradon Beatty

Kathleen and Howard Brand, Jacquelin Medina and Joseph Bronesky, Hugh and Colleen Burgin, Bonnie Camp, Korey Cayetano Smith, Cherry Creek Shopping Center, John Conley, Tim Conley, Ben Crowder, Lys and Tim Damato, Mary Donovan and Jeffrey Vogt, Peter Durst, Louise Ecoff, Courtney Essary Messenbaugh, Francine and Michael Fisher

Ms. Susan Forber, Keith Fuicelli, Ginny and Bob Fuller, Deana Gallegos, Ann Garner, Lester and Joan Garrison

Eric Grauberger, Larry Grauberger and Diane Dillingham, Beverly Haddon, Haffenreffer Family Fund, Adam Hawthorne, Bernice Hegge, Cody Higginbottom, Kaye and Bud Isaacs, Jean and Saul A. Mintz Foundation, Howard and Susan Jenkins, Steve Kaeuper, Susan Kuskie, Barbara and Gene Lang, Son Lee, Adrienne Leonard, Lot 3B1, B1, CTC, LLLP

Marin Community Foundation, Mark Honnen, Dezideria Martinez Cain, Jay Miller, Morgan Stanley Global Impact Funding Trust, MWBC LOT 10 LLP, MWBC LOT 9 LLLP, Jane and Skip Netzorg, Kayla and Scott Neumann, Nick's Garden Center, James Nollenberger, Kristen Nordenholz, Kelly Notaras, Oppenheimer & Co. Inc, Sarah Osmer, Cara Pool, Peter Rahm-Coffey, Richard Rose

Joann and Delbert Roupp, Annalee and Wagner Schorr, Shirli Sensenbrenner, Amanda Snitker, Pamela and Ronald Stutheit, Michelle Thatcher, Ruth Vanderkool, Brittany and Marcellus Wade, Tamara and Ken Weil, Mary Alice, Marianne Woodward, Thomas Yi

DONORS

\$500 - \$999

Debora Swanson, George Bezerra, Saint Barnabas Episcopal Church, FrontStream c/o Visa Giving Station, Calvin Reid, Rita Derjue and Carle Zimmerman, Ben Wilson, Pershing, Eventbrite, Maggie Doyle, Blackbaud Giving Fund, Krista Lavonas, Aaron Morgan, Molly Cotton

Sharon I. Lagendoerfer, M.D., Tyler Renehan, Dean Rue, Steven Skulnik, The Social MM, Nathaniel Mirelez, AmazonSmile, Sheri Di Paglia, Steve and Debbie Kennedy, The UBS Matching Gifts Program, Barbara Ward, Panorama by Frontstream, Facebook, Give Lively Foundation Inc., Sophie Lichens

Bonnie and Thomas Clarke, Kruger, Mike Renth, Grace Walsh, Burns & Wilcox, Courtney Uckele, Griffis Group Residential, LLC, Steve Anderson, Barbara and Michael Brannen, Thea Delamater, Kristen and Robert Engelke, Tricia Frachetti, Emma Garrison

Stephanie Gold, Barbara Harrison, Rachel Havranek, Liz Kenyon, KZ & Sallye King, Lee Lindsay, Allison Meyer, Amanda Reiman, Lou & Lauren Scalmanini, Kristin Stewart, Diana Walstrom, Teresa and Peter Williams

Sherry Levitt, Korean Church of North Denver, Elizabeth Gundlach Neufeld and Daniel Neufeld, McKinstry, The Import Mechanics, Frederick Robinson, Acova, LiveWell Center, Paris Lumb, Amy Nupen, Stephanie Anders, Scott Huebl, Kacy Vahey, Sunnie Kim, Vijay Ijju

Aaron Treat, Ellery Gould, Matthew Dickinson, Kenny Sandhu, Emily Bacon, Bank Of America Charitable Gift Fund, Ms. Alice A. Barron and Ms. Kaye L. Garms, Lindsay Bullot, Megan Busby, Nancy Cason, Cindy Christensen, Gary Clark, Lew Colgan, Kathy Covert,

Mary Ann Creamer, Theresa Damian, Julia Dobbins, Dyann Domoracki, Edward Jones, Patricia and Gordon Eichman, Ed Farrell, Barbara Furutani, Griffis Group of Companies LLC, Becky and Keith Hammond, Glenn Hammons, Kimberly Harp, James Harvey, Susan Hinckley, Hollynd Hoskins

Sasha Hutchings, ImpactAssets, JLT Ministry, Ben Jubenville, Adrienne and John Karns, Mark and Pam Kastler, Sylvia Kreider, Alison Leard, Phuyen and NGHIA Luong, Kathleen Meehan, MWBC LLLP, Kathleen Oatis, Kevin O'Brien, William Orendorf, Mark and Fay Plummer

Carol Rathe, Shirley Rhoads, Sandy Righter, Corry and Steven Robinson-Rosenberg, Peggy Rottner, Jan Vilkaitis and Larry Routten, Bob and Linda Schenkein, Patricia A. Schraeder, Barbara and Barnet Schranck

Donald Simpson, Susan Blake-Smith and Scot Smith, Ed Stein, Mary Stewart, Ronnie Storey and Molly Moyer, Judith and Meyer Sussman, Ingrid Tague, Diane Tischler, Trollheim Building Corporation, Wellshire Presbyterian Church, Yield Giving

DONORS

\$250 - \$499

Robert Longway, Jensen Smith, Alpha Delta Kappa - Alpha Chapter, Nate Mirelez, Sara Van Hatten, Network for Good, Helena White, Epiphany Lutheran Church, Robert Donziger, Beverly Long, Mary Bellamy, Charles Schwab & Co, Richard and Richard Cheever, Bettina Grandey, Rich and Pam Hennessey, National Financial Services LLC, Lee Ann and David O'Brien, William Ohs, Ruth Wolff, Dorothy Zandstra

AP Bruce Gould, Otten, Johnson, Robinson, Neff & Ragonetti, P.C, Amy and Ian Paton, Don and Nancy Dhonau, Mike Huff, Amanda Schwartz, Janice L. Hicks, Taylor Norberg, Kroger, Grecia Chavez, Robinhood, Alison Alexander, Brenda Hollis, Chelsey Bardgett, Holly Borowski, Patti and Tim Capps, Susan A. Carr

Catherine Crane, Crystal Fattor, Eugene Firmine, John Gibert, Melinda Harriman, Michelle and Hugh Harvey, Sarah Heckroth, Mary Kathleen and Richard Hickey, Mike and Melanie Huff, Erica Hunzinger, Mary B. Lundquist, Barbara Maddox, Shannon Magee, Wendy Maher, Adrea and Dale Mehl, Metro Bridge Club, Mountain Pine Woman's Club, Lucy Padilla, Victoria Ponce, Ashley Roberts, Janie and Stephen Saul, Lauren Scanlan, Katherine Smiles

Rebecca Solsbery, St Paul's Episcopal Church Needle Craft Group, Pavlos Stavropoulos, Jaylyn Stoesz, Lucas Strom, Daniel Stuart, T. Rowe Price Foundation, Inc., Brianna Tancher, Sally Taylor, Mark and Anita Tharnish, Monika Treipl-Harnke, Katie and Chris Trujillo, Carol Walters, Susan Weinstein, Barbara Wilcox, Rita Williams, Laurie Wilson, Kay Wynarsky

Janis Zloto, State Of Colorado - Office of the State Controller, Good Chemistry, Batya Stepelman, Chaitra Wirta-Leiker, Sally Isaacson, Ilyanna Kreske, Anne Beman Young Special Needs Irrevocable Trust, Patricia Clark, Amy Dreier, Itay Tenne, Lola Grueskin, Devon Anders, Karen Asimos, Nazia Aultama, Nancy and John Battilega, Judith Birnbaum, Daniel Bowles, Elliot Brown, Heather Brown, Michael Bustos

Marie Casaus Marquez, Bob Clark, Vicki Cowart and Chris Hayes, Allan Crandell, Judith Cullen, Jeanne DesRoche, Candace Edington, Marshall England, Amy Feinstein, Dr. James Flowers and Diana Kasson, Menk Family Foundation, Mitchell Goudy, Christina Harrington, Elizabeth and William Hickam, Todd & Beth Hoffman

Patty and Holligan, Marilyn Howard, Erick Jones, Deborah Knapp and James Mackay, Laurence M. Boothby Irrevocable Trust, Ellen Levy, Mary Litwiler, Christine Martell, Veronica and Donald May, Lance McGaughey, Sarah Messina, Julie Miller, Marjorie and Paul Miller, Dale Murphy, Christine Nagelhout, Deborah Ostergard, Julia Parrino George and Richard George, Mr. John J. Peery, Kent Penley, William Pincus and Nancy Stead

Anne and Adam Poe, Diane and Don Poulter, Progressive Insurance Foundation, Lee Renfrow, Mark Rhine, David and Terry Ruiter, Rebecca Russell, Elizabeth and Arthur Schmidt, Caroline Schomp, Schwab Charitable, Loretta Sharp, Helen Stone, Ann and Todd Swanson, Jill Todd, Meg and Patrick Vellone, Elaine Webster, Maxine B. Woolf, Bernice and Raymond Yost

DONORS

Nicole and Anthony Del Vicario, Saskia Sawyer, BichDzu Truong, Karen Wisher, Cybergrants, Jonathan D. Fagan, James Ashe, Generous Charitable Inc., Jana Pedowitz, Clarissa Griffin, Carolyn Tefteller, Matthew Lipton, Olivia Shendell, United Way Heart of West Michigan, Heart of West Michigan United Way, Mildred and George Cole, Richard L. Barnett, Sally and Barry Bender, Sharon Berget, Kathleen Bohland, Susan L. Bolton, Bomar Painting, Shirley and Thomas Bowman, Elizabeth Cochran, Mary E. Connelly, Chris and Nancy Cross, Louanne and Jim Dale, Paul Dechichio, Jenny Dyer, Charles Ehrenpreis, EliteCS Inc, Kelly Etter, Judith Fahrenkrog,

Tripura Foundation, Kay and Thomas Furtak, Kelly Griffin, GR's Foundation, Stephanie Gruber, Colleen Hall, Jeremy Harris, Alice Hyatt, Elizabeth and William Johnson, Marjorie and Mark Jost, Sarajeon King, Russ and Fran Kraus, Laff Foundation, Inc., Katherine Malsam, Peggy Marks, B. Kay McIntyre, April Montgomery, Annette Montoya, Larry Morin, Aya Nakazato, Tracy Nguyen, Mary and Charles Patton, Sandra Portfliet, Matt Powell, Robert B. Renfro II, Rita Rinner, Bethany and David Roahrig, Sharon and Justin Roth, Kendyl Salcito, Joanne Salzman, Michael and Catherine Selway, Susan Shapiro, Ninette Shappell, Gregory and Sylvia Smith, Judith R. Sohn, Michelle and Gouglas Striker, Kristen Struble, Karen Van De Water, The Visser Family, William von Drehle, Marilyn Walter, James White, Jim Wyant, Margaret and Robert Zenn,

Sheila and William Zipprich, Sandra D'Amico, United Way of Lake County, Nicholson Beer Project LLC, Stacie Hanson, Catherine Mulhern, Ms. Alice Turak, Rhiannon Alpers, Rita Day and David Day, Catherine Flynn, Laura B. Kaes, Diane and Ronald Lessnau, Margaret Mazzarella, Catherine Murphy, Leslie Pedersen, Marian Rubey, Sharon Stuhler, Rebecca Trujillo, Jennifer Wood and Vernon Berry, Ted Bettridge, Michelle Valeri, John and Carol Abel, Margaret Hagood, Denise Johnson, Rebecca Aslin, Ms. Sandra Carter-Duff, Clinton and Clinton Cave, Mardi Chase, Benjamin and Melanie Chenard, Joseph Chomas, Shana Colbin, Debra Death, Ryan DiFranco, Britt Dignan, Douglas Gammell, Sue Gould, Ramona Graves, Louise Haggerty, Jill Hill

UNDER \$250

Laura and Craig Hill, Robyn and Steven Kanewske, Robert and Patricia Lackner, William Latourette, Elizabeth and Pettersen Marzoni, Dave Mattie, Erin Meyerhoff, Timothy Mings, Laura Nass, Felisa Opper, Catherine and James Osborne, Robin Rothman, Cynthia Vaughn-Sanger and Dennis Sanger, Julia Stewart and Inga Nelson, Cle C. Symons, Anthony Taliercio, Pamela Tyrrell, Cynthia A. Van Derhoof, The Giving Block, McAuliffe International School, Kevin LangRonald and Gisele Conn, United Way Suncoast, Father Eugene M. Franceschini, Marilyn Hansen and Norm Redd, Alexis Romero, Matthew Cole, Jue and Kari Cao, Barbara Englert

James Lesniak, Lindsey Merkle, Robert O'Connor, Maria Sanchez, Peggy Sheldon Ritchey, Jessica and Wall, Rae Young, Anne Bielecki, Virginia Collins, Carema CookMasaud, Anita and Gary Cummings, Marla Digitale, Paul Drechsler, Derrek Hidalgo, Edward Hoffman, Meredith Jones, Callie Mabry, Elyse Maranjian, Terri Melville, Elena Nunez, Cari Smith, Mackenzie Tucker, Amy Willson, Marie Deom, Edna Ramey, OneHope Foundation, Anna and Stephen Adams, Marin Adkisson, Phyllis T. T. Albritton, Josh Alexander, Rebecca R. Andrade, Nancy J. Andrews, Barbara and Larry Enos, Kimberley Stewart and Donald Bacon, Becky Dascher, Elizabeth Keeler, Kristal Gump, Greg Kleiner, Karen Gross, Robert Katz, Jerilyn Laws, Randy Benedict, Timothy Smith, Kara Harris, Ariana Keehn, Julia Archer, Melissa Ardis, Diana Arendrup

Donna Baker-Breningstall, Donita Banks, Rebecca Benes, Steven Berger, Kathy Bergling, Amanda Bickel and Peter Mayer, Jennifer Bielak, Lanise Binkley, Susan Bomar, Susan Bonsall, Suzan Boyd, Nanette Bracken, Greta Brandstetter and Martin McCabe, Bitzie and Kenneth Brooks, Casey and Lori Brown, Joan Brucha, Helen Buchsbaum and David Posner, Jeanne Cahn and Elliot Sulsky, Christine Caldwell, Daedre Carlson, Susan Carter, Bobby Clevenger, Nancy Cook, Judi Coutts, Pamela Davis, Tracy Delaney, Sondra R. Dirks, Jennifer and Michael Dorsey, Preston Driggers, Diane and Dan Duke, Gayle and David Ebel, Maurine and Gary Edwards, Michelle A. Elsasser, Linda and Lawrence Emsing, Stuart Evans, Gerald Falchook

DONORS

Fidelity Brokerage Services LLC, Randy Flipse, Trudy Forsyth, Robert and Candace Frie, Michele and Donald Fuerst, Robert Garber, Laura Geiger, Allan Gerstle Girl Scout Troop, Sandra Goldhaber, Margery Goldman, Grace United Methodist Women, Amy Grafton, Elaine Granata, Gertrude Grant, Newell M. Grant, Ellen Graves, Dorothy Hackett, Lauren Hartman, Roberta A. Heisterkamp, Donna Henning, Toni and Clifford Hilton, Sarah C. Hite, Douglas Hoff, Margaret Hollingsworth, Sari Horovitz, Deborah Hottinger and Margaret Warren, Linda Huang and Charles Holum, Matthew Hulbert, Sandra and Timothy Ireland, Richard Irons, Charles Jacobs

Allyn and Stanley Jarrett, Stanley Jarrett, Paul Johnson, Susan Keil, Barbara Klein, Devin Konecny, David Krieger, Grace and Eric Kritzer, Betty and Warren Kuehner, Anne Lacelle, Carolyn and Earl Lammers, Aubrey Lavizzo, Charles Lefkowitz, Haddas Lev, Jennifer Liddell, Marilyn Lindenbaum, Cathy and Robert Lyons, Heather MacPhail, Margaret and Richard Marshall, John Martin, Michael Martin, Sigmund and Mary Mazur, Ann Mcbournie, Harry and Lyell McConnell, Garvin and Alice McCurdy, Gail McDonnell, Shirley McGregor, Tanya McMurtry, Marlene and Ronald McWilliams, Ronnie Beth Menaker, Amy Merello, Milsner Family 2020 Trust, Caitlin Murphy, Shennon and Gregory Murray, Jane and John North, Linda Olsen, Angie Osili, Heidi Parsons and Mark Erickson, Virginia Pedersen, Joyce and Don Peluso

Greg Peters, Amy Peterson, Kelli and Evan Pfaff, Rachel L. Pidgeon, Ken Plum, Anthony Powell, Mollie Rael, Linda and Philip Reisbeck, Catherine Reiter, Theodora Richards, Wendy Ritz, Clint Rivet, Richard Roark, M.D., Lorraine Robinson, Dr. Linda Rosenberg, Paulette Roskos, Ann Scarboro, Ph.D., Sandra K. Scherer, Jerry Schmitz, Jeff Schuller, Jennifer Schwem, Jane Scofield, Jean Settles, Barbara and William Sharp, Bonnie and Leslie Shenefelt, Judith Silverberg, Risa Silverman, Jill and Allan Skorpen, Aislinn Skuropat, Mari and Stan Smazal, Barbara Smith, Betty Snow, Jennie Staritzky, Linda Stevenson, Helen and Lyle and Helen Stewart, Carolyn S. Tank, Carol Taylor, Elizabeth Taylor, Bryce Tobin, Mr. Jay Treat, Joanna Tremont

UNDER \$250

Alison L. Tyler, Lynne Valentine, Ralph B. Valentine, Wende Valentine, Sandra Van Portfliet, Klasina Vanderwerf, Margaret and David Vogel, Gail and Joseph Walkowich, Gary Westerfield, James Wilbourn, Ms. Donna J. Willis, Courtney Wilson, Carole Wright, Jean Yien, Diane Zarlengo, Celeste Schimmenti, Anne Anselment, Jacqueline Lang, Crypto Adoption Fund, Jennifer Abercrombie, Louis Levine, Connie Zumpf, Naomi Knorr, Kathryn Blanas, David Denton, Kat Dudden, Andrew Feltham, Jenna Gibbs, Candace and Patrick Gonzales, Bonny Griffith, Marcia Hawes, Lucas Kwerneland, Faye Lindenbaum, Marissa Mink, Laurie Moore, James Norton

Stephen Vogler, Maryann Waugh Jo Anne and William Slavena, Alicia Adams Amadu, Elizabeth Luppino, Frances L. Dutro, Carol A. Evans, Kay Griffel, Sara L Jackson Shumate, Michael McAffrey, John Vasquez, Jane Altemeier Baker, Kim and Craig Arnold, Cathy and John Bartle, Dennis and Christiana Brown, Raymond E. Coffey, Emily Daniels, Michelle Dechantal and Richard Krantz, Andrea Dikeou, Gayla R. Dunning, Judith Faught, Courtney Fleming, Maddie Ganzlin, Courtney Griffin, Dianne Hatch, Judith Hubert, Marilyn and Russell Kemp, Peggy Neiles, Carol Newman-Holitza and F. James Holitza, Mr. and Mrs. Kent A. Oakes, Teresa Otley, Chris Phillips, Vickie Puchi, Jean and James Reeder, Cynthia B. Rundstrom, Sandra Schaffer, Cynthia Carr and Mark Scherer, Mirella Schreiber, Kaye Siemers, Elissa Soden, Cheryl Stratten

Kjersten Sullivan, Maya and Jim Wilbourn, Fredlyn Zitter-Smith and Timothy Scott Smith, Gerald and Carolyn Anderson, Megan Kelly, Elizabeth Gile, Geoff Macdonald, Lisa Orgren, C Zwahlen, Christopher Olson, Lauren Craig, Janice and Lester Garrett, Margy Miller, Kimberli Mullen, Letitia Ottem, Shoshanah Schein, William Stephan, The Spot Cafe, Dolly and Bert Lager, Charles and Annie Adkisson, Susan Roth-Allen and John Allen, Denise Allman, Barbara Altshuler, Marilyn Andersen, Anna Martinez, Anthony Rodriguez, Kathryn and Kevin Baum, Brian Voller and Sarah Schink Voller, Susan McCabe and Cynthia Guthals, Virginia Czarnecki, Melanie Durocher, John Bernhardt, Brenda Sandoval, Cathleen Auman, Nich Bailey

DONORS

Rebecca Barrilleaux, Katherine B. Bauer, Dustin Becker, Gary G. Bird, Lorethia Brown, Nan and Bob Burnett, Denise Burrows and Timothy Schnacke, Paul Carlson and Nancie Ziemke, Terry Casalla, Richard and Peggy Castle, John and Laurie Chahbandour, Rose Ann Chavez, Ann Cook, Carol Coppola, Christine Costello, Betty Croall and James Carney, Charles Davis, Claudia Diamond, Corinne DixJohn and Melissa Dover, Heidi and Gary Dudley, Kelly Dunkelberger, Wayne Dzingle, John Emm, Jr., Sabina Espinet-Todd, Adrienne and Keith Fahey, Nancy Farley, Robert Farrell, Stephen Fenderson, Donna Ferguson, Dr. Marguerite Fitch

Karen and Melvin Fleming, Antoinette Freed, David Frieberg, Ivor and June Garlick, Christopher George, Karen Gerlich, Linda and William Ginsberg, Sharon Glode, Glen and Jill Golden, Bonnie Greenawalt, Ann and Robert Greenbaum, Karen Griffin, Fredrick and Olivia Guggenheim, Lisa and Duncan Halstead, Peggy Hammersmith, Bonnie Hardwick, Hannah Hartman, Pamela Hartman, Jill Hatch, Virginia Heddens, Marcia Hocevar, Jay Hohensee, Martha Hoodak, Janice Hsu, Jason Huck, Jen Hughes, Helen and William Jackson, Barbara C. Johnston, Marilyn and Malcolm Jones, Jon K. Josephson, Lawrence and Joan Kalstein, Mary and Michael Katsampes, Kyle Keefe, Joshua Keyes, Maureen Kloser, Diane Knecht, Mary Kohl, Richard and Jody Koken, Laura Zane Kolmar, Margaret M. Krisanda, Ms. Claudia Kuhns

Carolyn Kwerneland, Jason Ladu, Ms. Carol Lantz, Judith Larson, Carla and David LeFors, DeeDee LeGrand-Hart, Janet S. Lepp, Mary and Herrick Lidstone, Pat Loftus, Christopher Lunger, Sarah Marlow, Marie C. Marquez, Carol I. Masterson, Raj Matkari, Sheila McAuliffe, Gary Mengel, Barbara and Bernard Meyer, Jane Michaels, Kerry Mierau, Terri Moore, Ronald and Roberta Moyer, Patricia Muller, June Mullins, LeAnn Nelson, Linda Neuenschwander, Tiffany Nieslanik, Mary Noble, Shirley and Robert Ochsner, Stephanie Olmore, Wendie and Steven Olshan, Nancy O'Neill, Jill Page, Cynthia and David Paladino, Carol L. Parsons, Patt Paul, Gloria Penny, Vincent Pesce, Matthew Petersen, Patricia Peterson, Pfaffly Family Trust, Joy Pinkston

UNDER \$250

Patricia A. Pohl, Elizabeth Pugliano, Henry and Patricia Rauchenstein, Bette Rehner, Ann Richardson, Katie Riley, Felix Rodriguez, Mickey S. Rovner, Walter and Edith Rowell, Linda Royer, Robert and Heather Sanchez, Angela Scanlan, James Schatz, Susan Schmidt, Bob Scott, Jori L. Sjostrand, Hall Skeen, Yvonne Smart, Susan and Leeray Smith, Roy J. Smith, Virginia Snyder, Judith Solano, James Speers, Donna J. Spry, Jennifer Stapleton, Ryan Steinbach, Marekah Stewart, Chloe Strascina-Dower, Carol M. Strini, Allison Summerville, Katherine and Ludvik Svoboda, Donna Swartzendruber, Victor M. Taggart, Jr, James and Jaqueline Torri

Gerri Trocheck, Mr. and Mrs. Robert C. Trujillo, Scott and Lisa Uyeoka, Thomas Van Cleef, Rekha and Nampalli Vijay, Roberta Waldbaum, Peter Wall, Myra Warren-Butts, John and Alice Weeda, Karen Weismeyer, Carolee Whitehill, Gail Wilson, Sue Wolff, Kim Zietz, Jeffery Beiter, Michael Holme, Roxanne Welle, Tudor Coleman, Katie Walsh, Neide C. Cooley, Eric Douglas, Julie Melbye, Steph Dodd, Patrick Kemp, Chelsea Liekhus-Schmaltz, Anne Anselment, Laura Arndt, Andrea Bateman, Helen Butts, Michelle Cacchione, Cindy Chang, J'Lyn Chapman, Mat Elmore, Lisa Fosslund, Barbara Gabriel, Marcus Gee, Shane Kokoszka, Diane Korte, Shirlee R. Londer, Mahia Mann, Elham Manshadi, Megan Matthews, Dr. and Mrs. David J. Muller, Sunil Narayan, Patrick W. O'Driscoll, Taylor Pridgen, Jill Robbins, Dawn Rohr, Jose Rosales

Megan Sheehan, Laura Stevens, Marcia K. Stevens, Jessie Stoolman, Carrie Wilton, Joyce Lisbin, Ann Roberts, Elizabeth Allen-Parrish, Melissa Jimenez, Jane Bigelow, Suzanne and Chris Blakeslee, Mary Hemmingway-Emrich and David Emrich, Brina Larson, Francis Mobley, Hanna Pedersen, Linda Rosales, Dianne Tobias, Margaret Walker, Lisa Zales, Doris K. Lackner, Andrea Ostroy, Lauren Bird, Tom Crennen, Jean Dewolfe, Holly Gayley, Ann Norton, Carol Prescott, Patty and Michael Rolnick, Cathy Smaha, Donna VanderPloeg, Julie K. Williams, Kathleen Wood, Ruth Zurkan, Ameesha Tolani, Sterling Williams, Alexandra Portanova, Allison McIntyre, Heidi Yates, Kelsey Artes, Kelly Garbo, Jennifer Oliver, Miwah Wong, Evyn Nelson

DONORS

Kaitlyn Regan, Helen Stalker, Jessica Jorgensen, Chelsea Wood, Allard Jobson, Wren Duggan, Allan Curtis, Stefanie Bell, Ms. Audrey Benson, Jane Billings, Beckie Champine, Jordan Day, Janice Dinner, Molly Doroba, Margaret and Andrew Feltham, Andrew Fraser, Lisa and Charles Haddox, Carol L. Hammel, Guy Harmon, Janet and Peter Henson, Riley Hillegas, Corrine and Steven Hitchens, Barbara Inama, Brian Johnson, Dana Knowles, Ethel Mae and Louis Lamberson, Manuel McCree, Meagan McFarland, Maggie McGill, Elisabeth Meisner, Pamela Meyer, Melisa and Todd Miner, Jacqueline R. Mullen, Anjali Nanda, Judith and William Proctor

Wendy Quinn, Sarah Reinking, Sheila Robinson, Zeljko Rod, Maxine Schrant, Billy Seiber, Lauren Sherwood, Ms. Kathleen Sullivan, Jo Ann Taylor, Christie Trahan, Kenna Uddenberg, Barbara Uliss, Kristy Viera, John Wilker, Gabby Woodrose, Anne Starace, Mary and James Abbott, Sherry A. Anderson, Mary J Genualdi, Deborah and Paul Cella, Nuvia Adame, Joanne Van Deusen, Doreen Kazura, Candess Giyan, Laurelyn Baily, Delores and Charles Barnard, Marlene J. Blair, Beverly Brayden, Rosalinda Calamari, Patricia A. Coates, H.W. Dellinger, Betsy Diggins, Deborah Drewes, Lucinda Dries, Peggy Dunn, Leslie and Craig Eubank-Soltis, Daphne Evans, Lisa Forrow, Paul and Eunice Foster, Pamela Fraser, Linda Futrell, Mary Ann Gains, Marge and Frank Gostic, Andrea Guntren-Nelson, Rodene R. Hall, Cecelia Hartman, Sonya Hirsch, Cheryl Hlava

Kathryn Huwaldt, April Johannesen, Rich Jones, Florence Kelsey, Krista Kilgus, Patricia Kriebel, John Lacy, Jr., Gregory Luna, Gail MacDiarmid, Ruby and Philip Maenpa, Carol Markley, Marty J. Mashe, Marthe E. Maxfield, William C. McClure, Kathryn and Donald McKenzie, Rebecca and Don Mills, Marsha Mitchell, Peach Mondragon, Mary Lou Mowry, Sheldon Muller, Marilyn Nathenson, Carol Nelson-Douglas, James and Patricia Paull, Jana and Aaron Pedowitz, Cassandra Radcliffe, Marcy and Frank Romer, Megan Rosen, Loretta and Jack Rule, Colleen and Peter Sanderson, Diana and Thomas Sheldon, Anthony Spahr, Bruce and Kelly Stahlman, Katherine Tamblyn and John Herbert, Ann Taylor, Leslie Tjarks

UNDER \$250

Janice and John Tull, Katherine and John Turton, Susan and Bob Tweedell, Pamla and Peter Van Huysen, Victoria Vitatoe, W. T. Baldwin Trust, Adam Weber, Susan Westerberg, Betsy Wiener, Anne Wilson, Eileen Yager, M.D., Belva and John Zeck, Rhonda Zeller, Marc Buchanan, Garrett Cook, Abbe Boniface, Shirley and Jack Banks, Nancy Brigham, Sandra Brown, Jane E. Buck, Andrea Collatz, Robert and Marcia Davis, Robin Davis, Beverly Ditolla, Virginia A. Gamage, Joan Haywood, Barbara Iwata, JoyceAnn and Charles Kimball, Virgen M. Livingston, Carole A. London, Karen Loranc, George Lyman, Carol Moon Emrick, Elizabeth Page, Ms. Mary Anne Pixley

Jeanne and Eric Price, Theophilus Sangster, Jr., Megan Webber, Joshua Fallik, Patricia L. Speck, Laurie Albright, Zachary Schofield, Whitney Ault, Jessica Chagnon, Kathy Glatz, Barb Schintz, Sara Seedorf, Kayli Jarosz, Marilyn Markel, Galina Anisimova, Angie Hiss, Cailin Rogers, Denise Gillam, Carol Campbell, Sue Doyle, Jack Gudes, Cheryl Loetscher, Jacqueline Macheel, Megan Post, George Williams, Balint Altdorfer, UKOGF - United Kingdom Online Giving Foundation, Emily Shirley, Andrea, Andrea Garcia, Barbara J. Hamilton, Jenna Hrdlicka, Nate Hua, Hannah Pepin, Demi Rodriguez, Jules Shellby, Barbara and Steven Zimmerman, Isaiah Zimmerman, Anonymous **(53)**

While every effort is made to ensure the accuracy of our records, errors occasionally occur. If your name has been omitted, misspelled or misplaced, please accept our apologies and contact our Development Office at development@tgpdenver.org so that we may correct our records.

IN-KIND SUPPORT

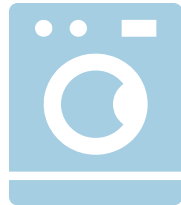
BOMBAS

Donates 7,000 socks annually.



EARTH BREEZE

Provides 42,240 laundry detergent sheets as needed.



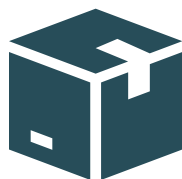
ST. MARY'S ACADEMY

Supplies dozens of boxes of period products annually.



CAPITAL HILL UNITED MINISTRIES (CHUM)/ WOMEN'S HOMELESSNESS INITIATIVE (WHI)

Provides hundreds of hygiene items, household items, baby/family items, and miscellaneous items monthly.



J. JILL

Contributes women's clothing, approximately 3 boxes, as available.



KNITTING4PEACE

Donates hundreds of items, including hats, scarves, gloves, and washcloths, as available.



PROGRAMMATIC PARTNERS

CONTRIBUTIONS & IMPACT

DMV2GO

Provides on-site DMV access to members, essential for those needing IDs, having trouble making appointments, obtaining funds, or accessing transportation.

Facilitated over **101** member appointments.

COLORADO COALITION FOR THE HOMELESS

Stout Street's referrals and housing partnership for Rapid Rehousing Collaboration.

Improved health and housing outcomes for members.

WELLSHIRE HUNGER TASK FORCE

Provides monthly donations for the food program and hygiene products 1-2 times a year, including holiday food boxes in December.

Enhanced supplemental food purchasing ability with a \$200/month donation.

WEECYCLE

Supplies affordable childcare essentials such as diapers and baby gear ordered by TGP for families.

Provided approximately 7 baby gear items per month and 3,750 diapers per month.

COLORADO ARTISTS IN RECOVERY

Monthly art classes to support recovery efforts.

Engaged approximately 2 members per month.

BAYAUD ENTERPRISES

Provides employment opportunities and assists with community clean-up.

Performs wellness checks with members and helps us be a good neighbor by cleaning outside and around property.

SERVICIOS DE LA RAZA

Offers supportive services for individuals impacted by intimate partner violence, mental health, and substance use, including case management, 1:1 therapy, and support groups in both English and Spanish.

Conducted onsite outreach and intakes monthly.

ADDICTION RESEARCH AND TREATMENT SERVICES

Provides onsite Medicated Assisted Treatment appointment scheduling, treatment, and recovery services, and peer specialist referrals.

Facilitated onsite substance treatment coordination with low barriers.

DESERVING DENTAL

Monthly onsite dental cleanings and care, seeing five patients each visit.

Assisted approximately 5 members per month.

DENVER HEALTH WOMEN'S CLINIC

Schedules appointments at Denver Health for mammograms and cervical exams, with monthly onsite mammogram exams.

Facilitated approximately 20 exams per quarter.

COMMUNITY INSURANCE OPTIONS

Provides health insurance plan navigation, application assistance for cost-saving programs, and coordination of current benefits.

Assisted approximately 4 members weekly.

DENVER COLLEGE OF NURSING

Nursing students provide medical advice, blood pressure and blood sugar checks, and examine medical issues that don't require the removal of clothing.

Enabled quick medical assistance without extensive procedures.

WELLPOWER

Offers intake with a clinical case manager to connect members with licensed therapists for mental health support weekly.

Members were quickly connected to mental health therapists with low barriers.

DDPHE

Administers bi-weekly COVID testing through the Department of Public Health and Environment at The Gathering Place.

Tested approximately 5 members per month and vaccinated about 4 members per month.

COLORADO COALITION FOR THE HOMELESS - HEALTH OUTREACH PROGRAM (HOP MOBILE CLINIC)

Provides basic medical services onsite weekly through a mobile clinic.

Serves approximately 5 members weekly, offering essential medical care and support.

DENVER UNIVERSITY WRITING PROGRAM

Provides weekly drop-in writing support sessions for members.

Assists around 3 members weekly, enhancing their writing skills and self-expression.

ART STUDENTS LEAGUE OF DENVER

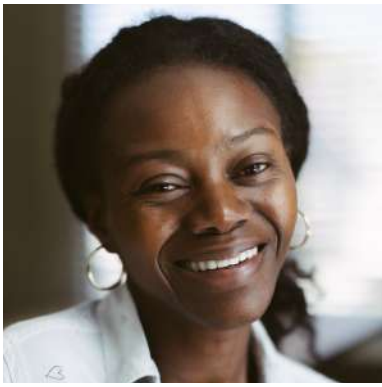
Connects art instructors from various disciplines to TGP to provide low-barrier studio art instruction for all levels monthly.

Engages about 12 members monthly, promoting creativity and skill-building through art.

SWALLOW HILL

Provides instruments and a Certified Music Therapist for 4-8 week therapeutic music groups for adults and children.

Each week, around 5 adult members and 3 children participate in music therapy sessions for 5 consecutive weeks, enhancing their emotional well-being and personal growth through music.



THANK YOU

All that we accomplished in 2023 was because of this incredible community! To each and every one of you, thank you! TGP is filled with stories of both struggle and resilience, of individuals creating the future they have long hoped for.

Your unwavering support has made this possible.

Thank you for your dedication to making Denver a more equitable place, where everyone has access to a robust support system and essential stability services.

As we look to the future, the need in Denver continues to grow, and to meet these increasing demands, The Gathering Place (TGP) relies on the steadfast support of our community.

Increased funding is crucial to sustain and expand TGP's vital programs, enabling us to help more individuals and families transition from crisis to stability.

By engaging the community and securing more funding, TGP can uphold its commitment to transforming lives for women, transgender and nonbinary individuals, and children experiencing homelessness and poverty in Denver.

Together, we can continue to make a profound impact and create a brighter, more equitable future for all.

Thank you for being part of this journey and for your continued support.

GET INVOLVED

What can you do?



GIVE TO TGP

Support programs that assist women, transgender, and nonbinary individuals, and children experiencing poverty and homelessness.

Visit tgpdenver.org/donate to make a donation.



BECOME A RECURRING DONOR

- **\$25/mo** helps provide Housing-Focused Case Management to 1 person
- **\$50/mo** provides a hot meal for 50 people
- **\$100/mo** allows a family to access a full suite of program resources for an entire year, including Housing-Focused Case Management, Wellness Services, Clothing, Baby Products, and more.

Visit tgpdenver.org/donate to setup a recurring donation.



SHARE TGP'S IMPACT

Spread the word about our mission, impact, and member's stories with your family, friends, neighbors, and colleagues.

[Join our mailing list.](#)

JOIN OUR TEAM

Explore career opportunities with TGP and help us make a lasting impact.

[Apply now.](#)

VOLUNTEER AT TGP'S DAY CENTER

Engage in Individual, group, or corporate volunteering opportunities to make a meaningful difference in our community.

[Become a volunteer.](#)

JOIN OUR BOARD OR A COMMITTEE

Contribute your expertise and passion to our leadership team.

[Apply now.](#)

The Gathering Place
1535 High Street
Denver, CO 80218

Thank You!
www.tgpdenver.org



The Gathering Place®
a refuge for rebuilding lives

REDLINE CONTEMPORARY ART CENTER

Provides a pathway for TGP members to enroll in the RedLine CORE Artist program and connects CORE Artists for monthly self-care art classes at TGP.

Benefits approximately 5 members monthly, supporting their artistic development and mental well-being.

COLORADO ARTISTS IN RECOVERY

Connects artists to facilitate monthly art classes focusing on the recovery process.

Supports around 4 members monthly, offering a creative and therapeutic outlet during their recovery journey.

EMPOWERMENT

Provides monthly testing for chlamydia, gonorrhea, syphilis, and HIV.

Tested approximately 6 members per month.

BOARD OF DIRECTORS

EXECUTIVE COMMITTEE

MAYA WILBOURN (she/her/hers), **Chair**
Community Volunteer • Immigration Attorney

JULIAN BENZ (he/him/his), **Vice Chair**
Community Volunteer • Data and Technology

SHAWNDA MERRIMAN (she/her/hers),
Secretary
Managing Director • Redwood Trust

CATHY SKULNIK (she/her/hers), **Treasurer**
Vice President • Sandbox Industries

MEMBERS

MICHELLE MURRAY (she/her/hers),
Immediate Past Chair
Community Volunteer

ELIZABETH FERGUSON (she/her/hers)
VP Revenue Operations •
Maxor National Pharmacy Services, LLC

CARLENE GRAHAM (she/her/hers)
Chief Operating Officer • Redwood Trust

JANA PERKSY (she/her/hers)
VP of Product Operations • CareerWise

JOHNNA FLOOD (she/her/hers)
CEO & Co-Creator • Elevated Denver

DERREK HIDALGO (he/him/his)
VP of Nursing Services & Chief Nursing
Officer • Craig Hospital